



*January On Floor '25*

mæve

# Valentines Day



- *Valentines gifting story lives here*
- *Dark denim and utility bottoms*
- *Lace and sheer layers paired with graphic baby tees*
- *Caden distortion paired back to graphic tees lives on main surface*
- *Damson Madder capsule featured*

















# Anine Bing



- *Anine Bing collection with slips, lightwash denim, and white tees*
- *Ensure styling feels Maeve with clean proportions and feminine accessories like flats and belts*
- *Denim Collette bar grounds the main surface paired with graphic tees and layered slip tops*









# Stripes Shop



- *Striped apparel pulled together with tropical accessories and home*
- *Emphasis on boxy tops paired with micro bottoms*
- *Simon Miller collection lives here*
- *Adjacent surface used for nautical capsule*







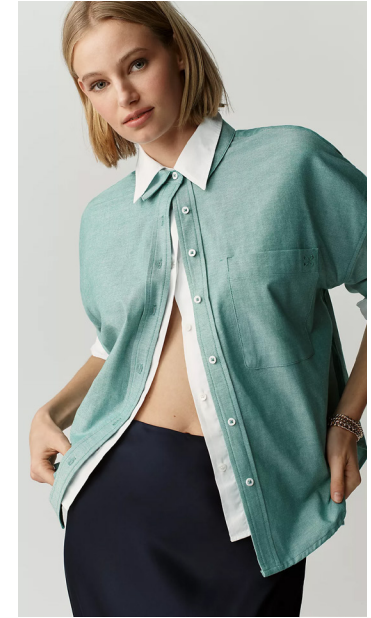








# *Shirting Shop*



- *Shirting paired back to track pants and lace layers*
- *Juliette distortion lives on main surface*
- *Styling should emphasize a balance between sporty and femme, utilizing silk scarves and delicate jewelry as accessories*











# *Shoe Shop*



- *Sneakers continue to live on the table along with sporty socks*
- *Wall showcases heels, flats, loafers, and sandals*







# Essentials



- *Shop grounded in butter yellow and clean tailoring*
- *Balloon pants will live here along with trousers and Tilda pant*
- *Tsu Lange Yor fragrance may live here to compliment color story*
- *Styling should feel polished with touches of sport*



more you. more mæve.







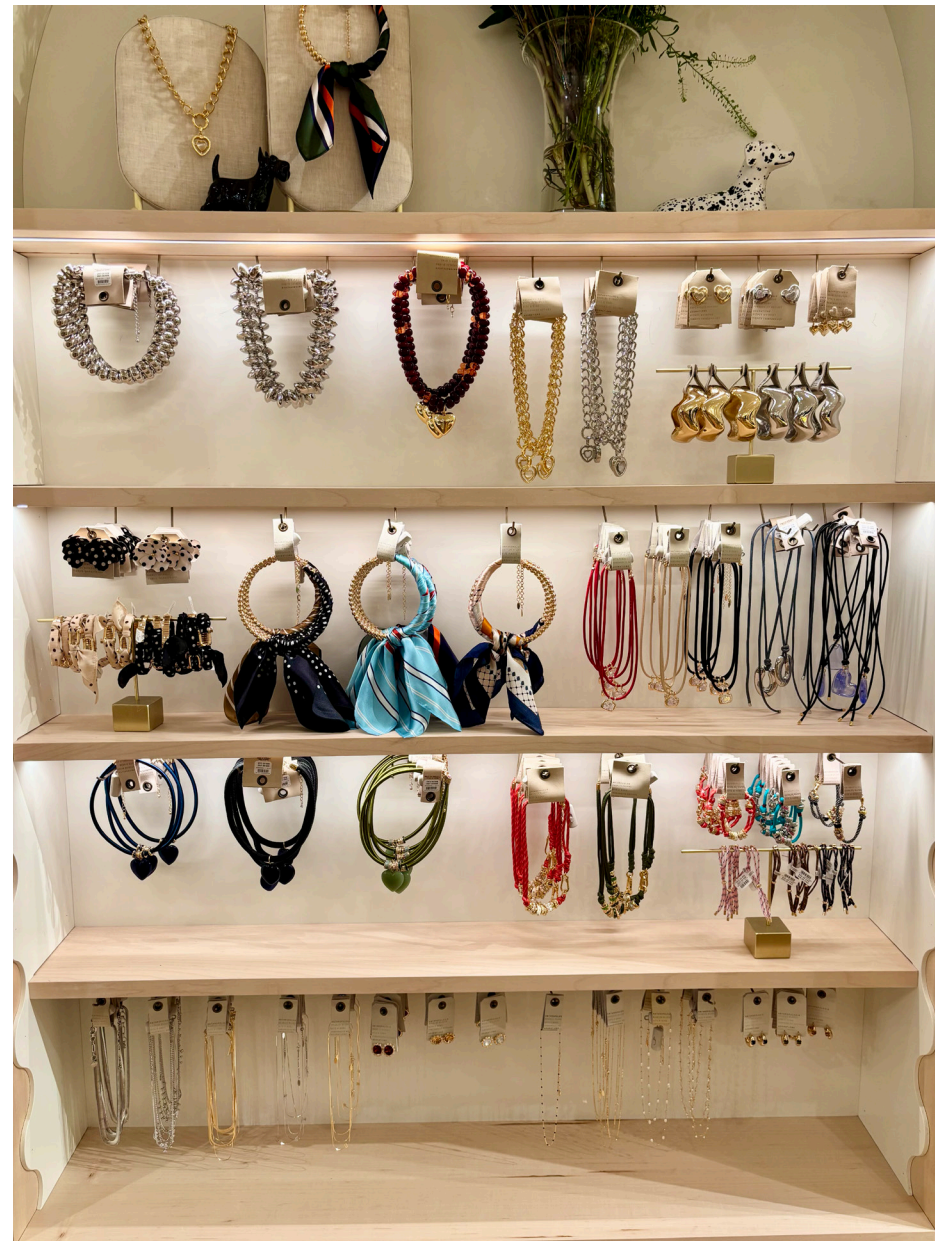
more you. more mæve.







# Jewelry



# Beauty Color and Hair



# Final Touches



